



***Discovering Large new Gold Deposits in the  
Eastern Goldfields***

***Investor Presentation : February 2018***

**Peter Schwann- Managing Director**

**ASX : AAJ**

# DISCLAIMER



The information contained in this presentation is for informational purposes only and does not constitute an offer to issue, or arrange to issue, securities or other financial products. The information contained in this presentation is not investment or financial product advice and is not intended to be used as the basis for making investment decisions. The presentation has been prepared without taking into account the investment objectives, financial situation or particular needs of any particular person. Before making an investment decision, you should consider, with or without the assistance of a financial advisor, whether an investment is appropriate in light of your particular Investment Needs, Objectives And Financial Circumstances.

No representation or warranty, express or implied, is made as to the fairness, accuracy, completeness or correctness of the information, opinions and conclusions contained in this presentation. To the maximum extent permitted by law, none of Aruma Resources Ltd, their directors, employees or agents, nor any other person accepts any liability, including, without limitation, any liability arising out of fault of negligence, for any loss arising from the use of the information contained in this presentation. In particular, no representation or warranty, express or implied is given as to the accuracy, completeness or correctness, likelihood of achievement or reasonableness or any forecasts, prospects or returns contained in this presentation nor is any obligation assumed to update such information. Such forecasts, prospects or returns are by their nature subject to significant uncertainties and contingencies.

## Forward Looking Statements Caution

Certain statements contained in this document constitute forward looking statements. Such forward-looking statements are based on a number of estimates and assumptions made by the Company and its consultants in light of experience, current conditions and expectations of future developments which the Company believes are appropriate in the current circumstances. These estimates and assumptions while considered reasonable by the Company are subject to known and unknown risks, uncertainties and other factors which may cause the actual results, achievements and performance of the Company to be materially different from the future results and achievements expressed or implied by such forward-looking statements. Investors are cautioned that forward looking information is no guarantee of future performance and accordingly, investors are cautioned not to place undue reliance on these forward-looking statements.

## Competent Person Statement

The information in this presentation that relates to Mineral Resource and Exploration Results is based on information compiled by Mr Peter Schwann who is the Managing Director of Aruma Resources Limited. Mr Schwann is a Fellow of the Australasian Institute of Geoscientists, Australasian Institute of Mining and Metallurgy and a member of the Society of Economic Geologists and has sufficient experience that is relevant to the style of mineralisation and type of deposit under consideration and to the activity being undertaken to qualify as Competent Person as defined in the 2012 Edition of the "Australasian Code for Reporting of Exploration Results, Mineral Resources and Ore Reserves". Mr Schwann consents to the inclusion in the release of the matters based on this information and the form and context in which it appears. All exploration results reported have previously been released to ASX and are available to be viewed on the Company website [www.arumaresources.com](http://www.arumaresources.com). The Company confirms it is not aware of any new information that materially affects the information included in the original announcement. The Company confirms that the form and context in which the Competent Person's findings are present have not been materially modified from the original announcements. All historic data has been sourced from Western Australian Mineral Exploration reports (WAMEX) and has been validated by GIS validation procedures by Aruma staff and consultants.

# POSITIONING STATEMENT



For personal use only

## WHO IS ARUMA RESOURCES

Aruma Resources is focused on the systematic exploration and development of large scale new sedimentary-hosted gold discoveries in the Eastern Goldfields of Western Australia;

- New gold system discovered at **Slate Dam Gold Project** – drilling ongoing
- Multiple priority targets over 50km strike length at **Beowulf Gold Project** – drilling Q4, 2018

# CORPORATE SNAPSHOT



For personal use only

## BOARD & SENIOR MANAGEMENT

Non-Executive Chairman  
**Paul Boyatzis**

Managing Director  
**Peter Schwann**

Non-Executive Director  
**Mark Elliott**

Company Secretary  
**Phil MacLeod**

Exploration Manager  
**Kathryn Cutler**

## TRADING INFORMATION

Share price (8/02/2018)	A\$0.02
52 week low/high	A\$0.006/A\$0.042
Shares on Issue	456.8m (12M options )
Shares Outstanding	Nil
Market Cap	A\$10M
Cash (31/12/2017)	A\$1.2M
Enterprise Value	A\$9M

## MAJOR SHAREHOLDERS

Directors – 6.96%

Top 20 Shareholders – 40%

## AAJ Share Price - past 12 months



# ARUMA'S PROJECTS

For personal use only



## PURSUING MULTI-MILLION OUNCE TARGETS

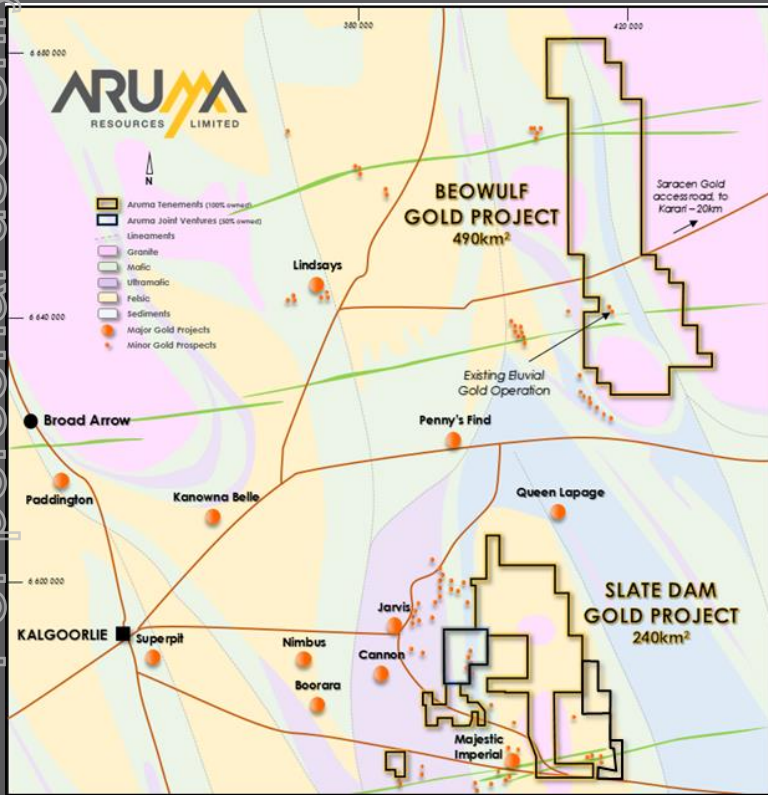
### **SLATE DAM (280km<sup>2</sup> – Advanced Greenfields)**

- Significant new gold system discovered – 4,000m- 40 hole RC drill program completed – balance of results due this month
- Major 7km<sup>2</sup>, 200ppb gold anomaly – multiple priority targets over 43km strike length
- Presents as analogous to Gold Fields' (JSE: GFI) nearby world class Invincible Deposit
- Results validate & strengthen geological model to host a large scale sediment hosted gold deposit

### **BEOWULF (490km<sup>2</sup> – Greenfields)**

- Multiple targets over 53km strike in new under explored greenstone belt
- Exceptional geological setting for gold mineralisation
- Widespread high grade gold identified –nuggets prolific

# EASTERN GOLDFIELDS FOCUS



## Identify targets and rapidly advance through exploration stages

- Large gold endowment in Kalgoorlie district
- Recent new exploration success under cover
- Greenstone belts misidentified
- New Targets for further major Greenfields discoveries
- Close to existing infrastructure and services

# SLATE DAM GOLD PROJECT

For personal use only

**Location** – 40km East of Kalgoorlie, >280km<sup>2</sup> tenement holding, 100% owned

**Along Trend** – Majestic/Imperial & Transfind gold mines

**What's Important -**

- **Large scale 7km<sup>2</sup>, >200ppb Au geochemical anomaly**

Other examples:

Tropicana Gold Anomaly : 31ppb

Bronzewing Gold Anomaly : 8ppb

Typically range from 6.5 to 40ppb

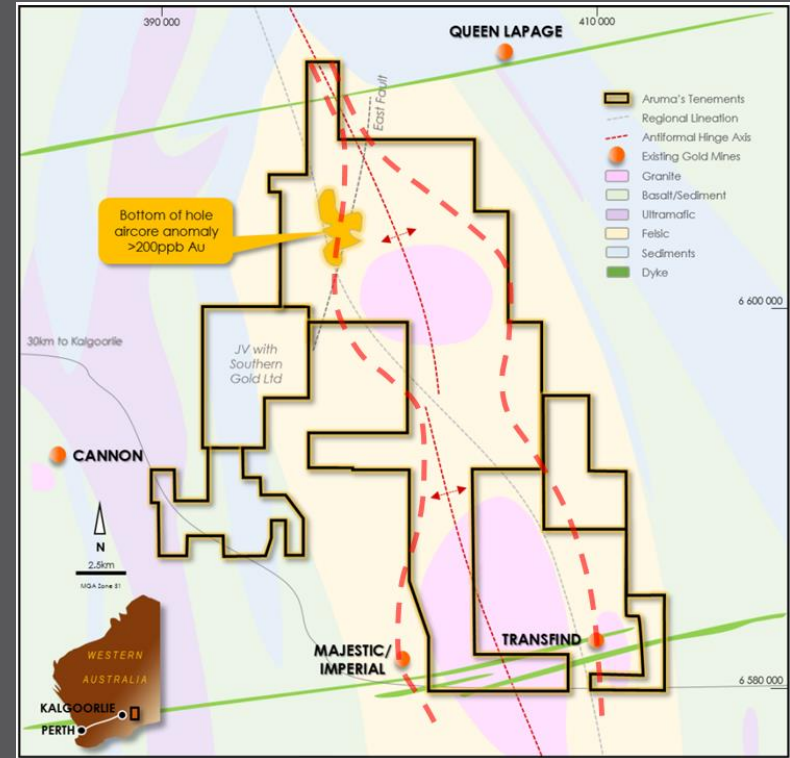
- **Historic Drill Intercepts**

GWD021 – 47.5m @ 0.5g/t Au = 23.8g\*m

GWD013 – 19m @ 1.08g/t Au = 20.5g\*m

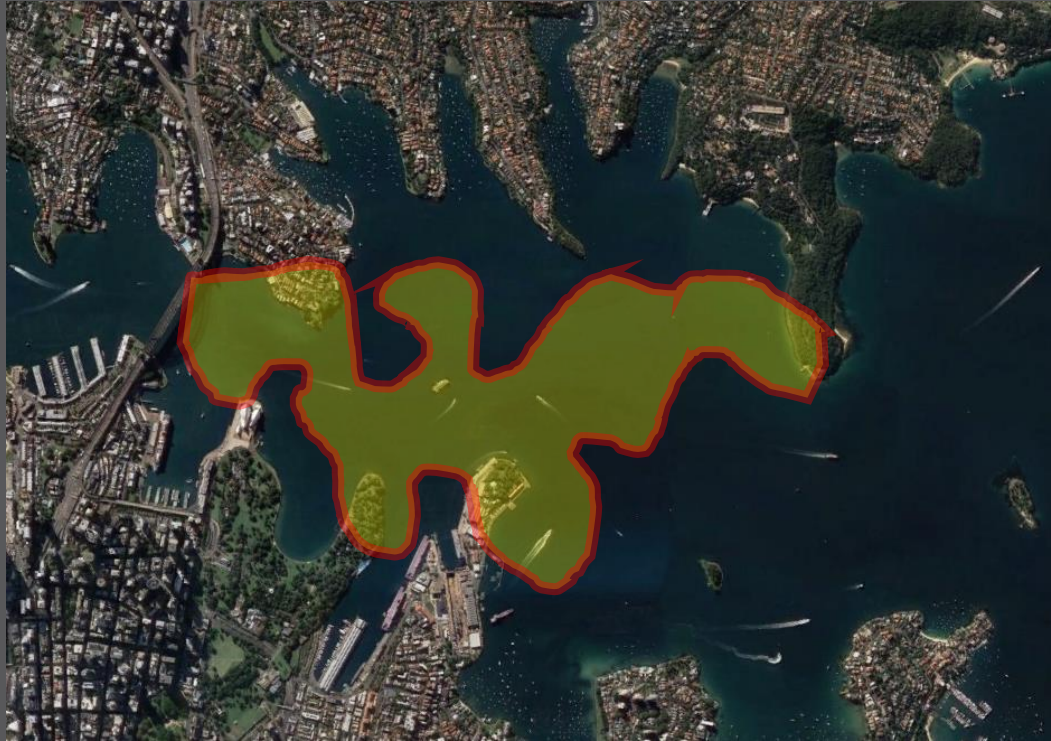
GWD005 – 38m @ 0.66g/t Au = 25.1g\*m

- **Same Rocks as the Invincible Deposit - BLACK FLAG GROUP**



# SLATE DAM – THE ELEPHANT IN THE ROOM

For personal use only



- The 7km<sup>2</sup> geochemical gold anomaly at Slate Dam is world class in **SIZE & STRENGTH**
- It would cover a significant portion of Sydney Harbour
- Very similar in size to Kalgoorlie Superpit



# SLATE DAM – PROJECT GEOLOGY

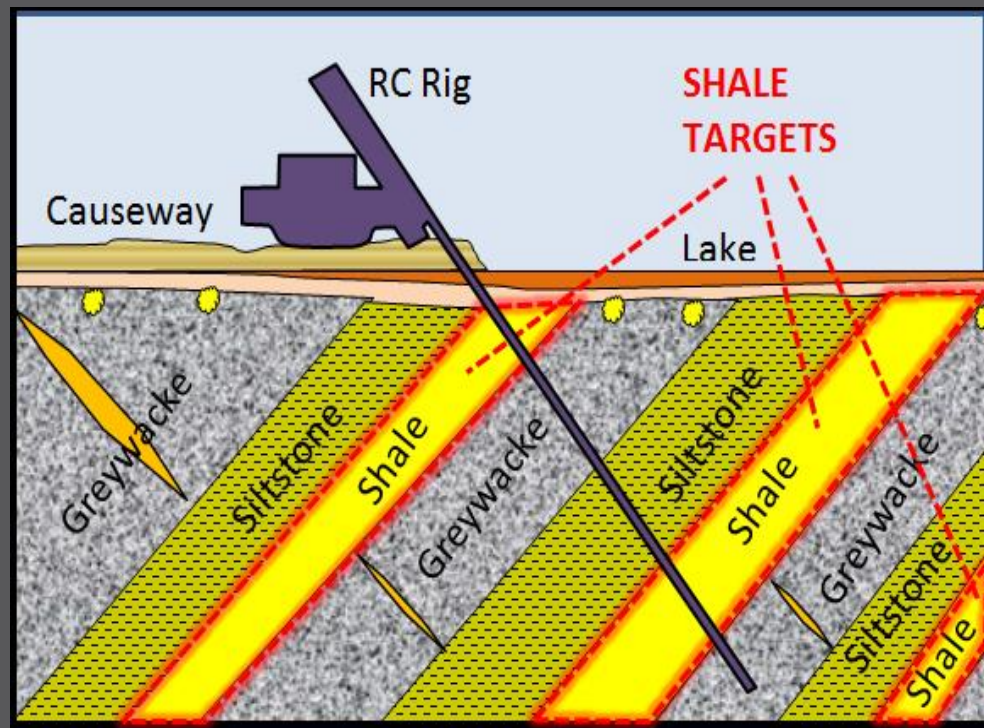
## SEDIMENT-HOSTED SULPHIDE GOLD MODEL

Slate Dam presents as analogous to Gold Fields Ltd >2M oz Invincible Gold Deposit at Kambalda

**Other major gold producers with similar traits:** St Ives, Paddington, New Celebration, Carosue Dam and Bardoc

## Slate Dam - Ticks all the boxes

- Fluid rich sediments
- Granite heat source
- Structures
- Gold anomalism
- Economic intersections

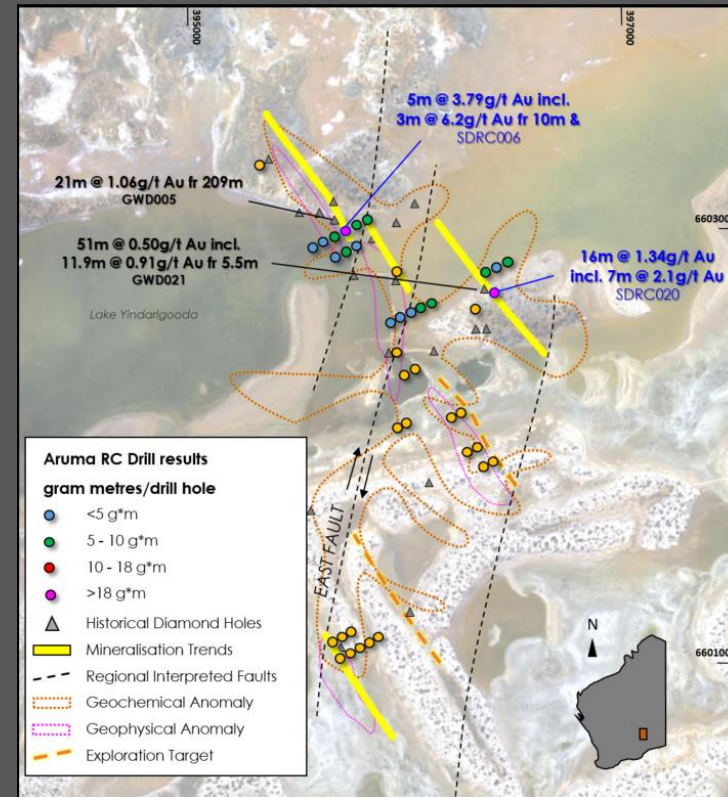


# SLATE DAM – DRILL PROGRAM

For personal use only

## 4,000M - 40 HOLE RC DRILL PROGRAM

- Completed January 2018
- First assays received and reported
- Highly successful initial results
- **Significant new gold system discovered from first assay results**



# DRILL PROGRAM OUTCOMES

## Highlight results include;

- 5m @ 3.79g/t Au from 9m incl. 1m @ 15.6g/t Au from 10m (SDRC006)
- 2m @ 4.20g/t Au from 92m to EOH (SDRC017)
- 16m @ 1.34g/t Au from 8m incl. 7m at 2.1 from 11m (SDRC020)

- 95% of all assays received to date intersected gold mineralisation
- Mineralisation present from surface - all intersections open along strike and up and down dip
- Results confirm & strengthen Sediment-hosted gold model

## New Developments

- Infill Rock Chip Program and Soil Sampling Program completed – to define new drill targets
- Results due this week



# INVINCIBLE GOLD DEPOSIT ANALOGY

## Invincible Open Pit Discovery

One of the most significant discoveries in the history of St Ives Gold Project and possibly in the history of the Western Australian goldfields is the discovery of an impressive high grade deposit that is being mined as an Open Pit and, due to its size, has been named Invincible. (Gold Fields Australia Pty Ltd Website)

- ✓ **2,000m long by 8m wide by 400m deep**
- ✓ **Started at 0.5M oz. at 4 g/t Au**
- ✓ **Now contains >2M oz. Gold**
- ✓ **Located in sedimentary host rocks of the Black Flag Group**
- ✓ **Initial drill results for the Invincible discovery by Gold Fields Ltd were:**
  - 3m @ 5.0g/t Au from 73m (LD11486)*
  - 4m @ 3.0g/t Au from 79m (LD11486)*
  - 6m @ 2.3g/t Au from 46m (LD11496)*

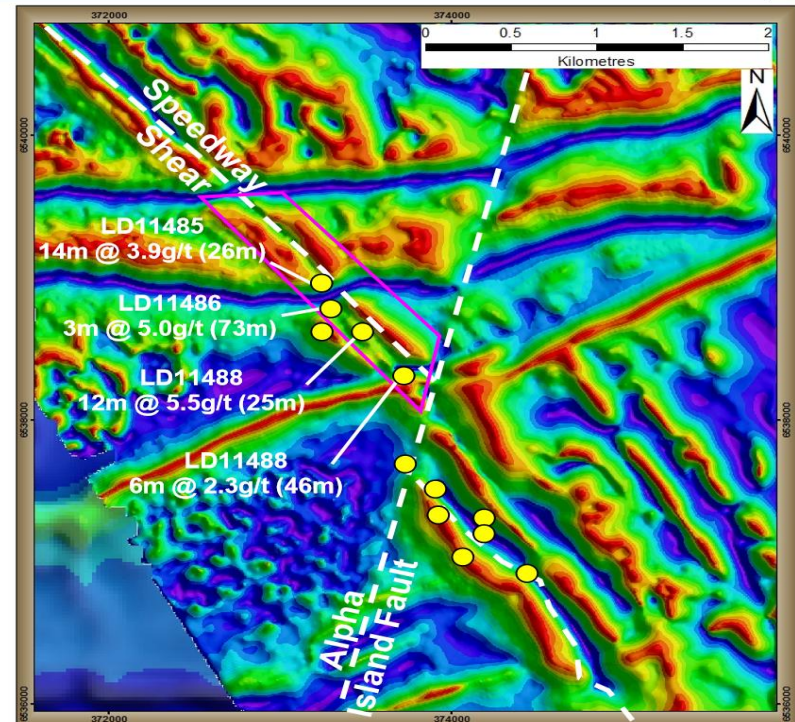
## Aruma Drill Program Comparison

- ✓ **Maiden drilling by Aruma confirmed Slate Dam is in the Black Flag Group Sediments**
- ✓ **Drilling results compare to Invincible**
  - 5m @ 3.8g/t Au from 9m (SDRC006)*
  - 7m @ 2.1g/t Au from 11m (SDRC020)*

# THE INVINCIBLE DISCOVERY

## Invincible; Discovery

- Structural Offset Target, Santa Ana Analogue
- Air Core & Percussion Holes Drilled in the Area pre-2011
  - No Significant Results from this Drilling
  - Structure not Effectively Tested
- 12 Hole Diamond Programme Testing the Prospective Position of the Structure in 2012
- 4 Holes Hit Ore Grade Intersections in Q1 2012 – DISCOVERY
- Absence of Regolith Development Explained Weak Geochemical Signature



Source: Goldfields 2014 Diggers and Dealers presentation

# THE INVINCIBLE STORY

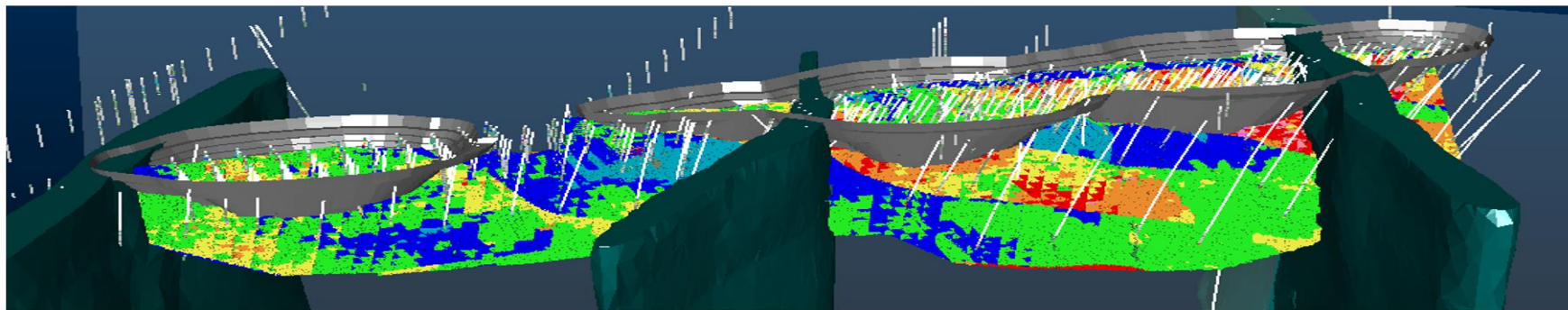
For personal use only

## Invincible; The Orebody & the Resource

- Shallow Plunging High Grade Ore Shoots
- Wide High Grade Zones
- UG Resource Constrained by Model Limits

2013 R& R Statement		Mt	g/t Au	koz
OPEN PIT	Resource*	6.2	4.7	946
	Reserve**	3.7	4.1	492
UG	Resource*	3.0	4.0	383
	Reserve**	-	-	-
TOTAL	Resource*	9.2	4.5	1,329
	Reserve**	3.7	4.1	492

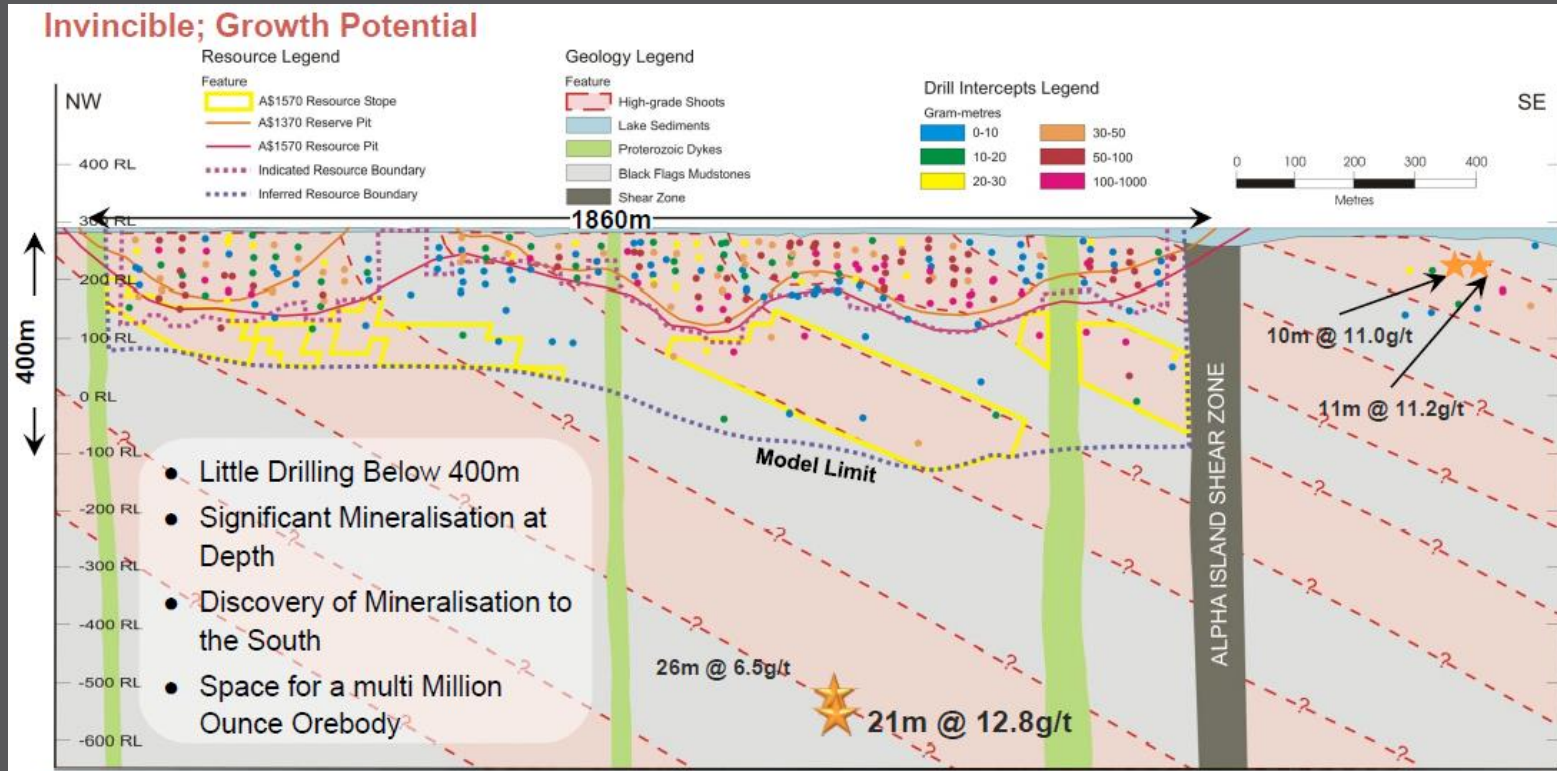
\* A\$1570/oz Au for Resource, \*\*A\$1370/oz Au for Reserve



Source: Goldfields 2014 Diggers and Dealers presentation

# THE INVINCIBLE STORY

For personal use only

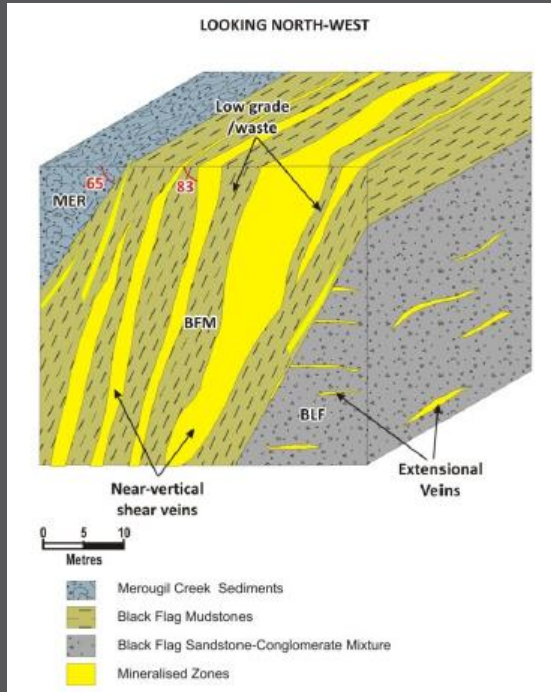


Source: Goldfields 2014 Diggers and Dealers presentation

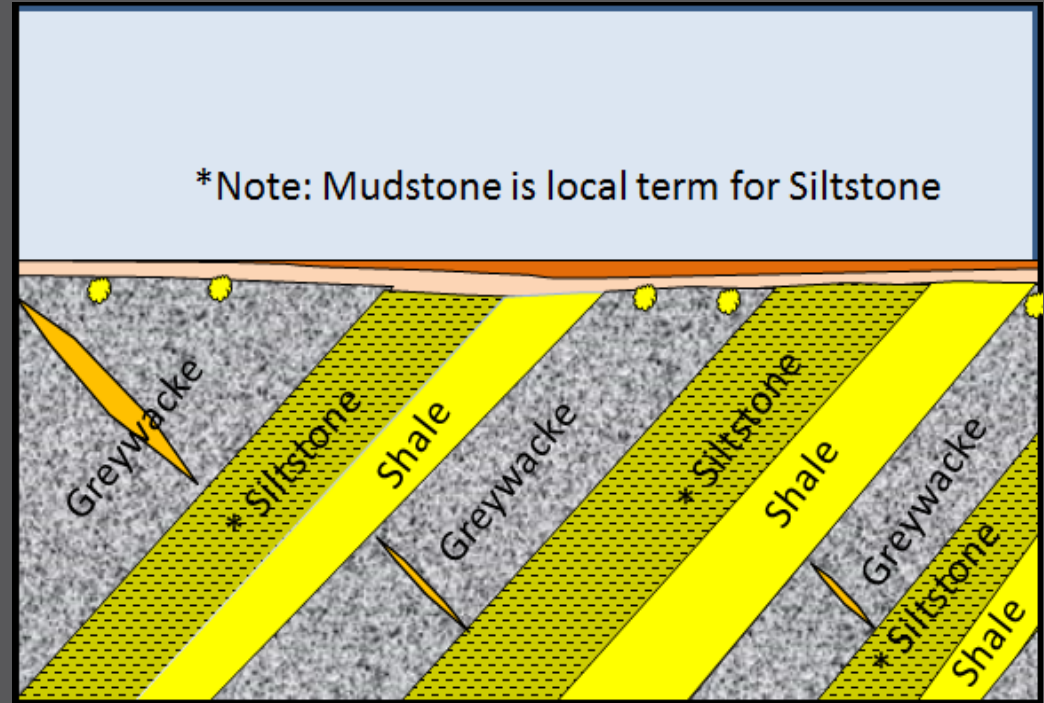
# THE INVINCIBLE STORY

For personal use only

## INVINCIBLE SECTION



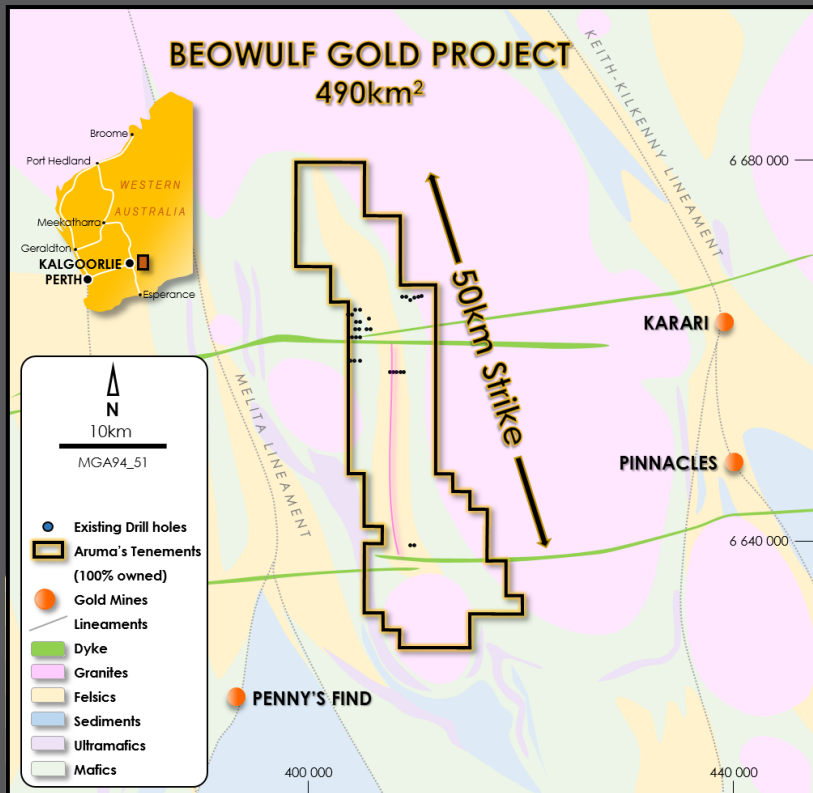
## SLATE DAM SECTION



Source: Goldfields 2014 Diggers and Dealers presentation



# BEOWULF GOLD PROJECT



## Previously unrecognised greenstone Belt

- 490km<sup>2</sup> tenement holding, **100% owned**
- 12km<sup>2</sup> Granted
- Located 70km North-East of Kalgoorlie
- New airborne data reveals greenstone Belt
- It is the west side of Carosue Dam stratigraphy
- Trends defined by gold nuggets (see over)
- Drilling planned for Q4, 2018

# BEOWULF GOLD PROJECT

## Belts of Nugget areas

- Small scale mining for 12 years
- Nuggets up to 14 ounces recovered
- In belts, seen in photo looking NE
- Trends defined by gold nugget finds in cleared areas
- Nuggets define areas of greywackes sandstones
- Areas to be drilled for shale lodes are west of nugget areas

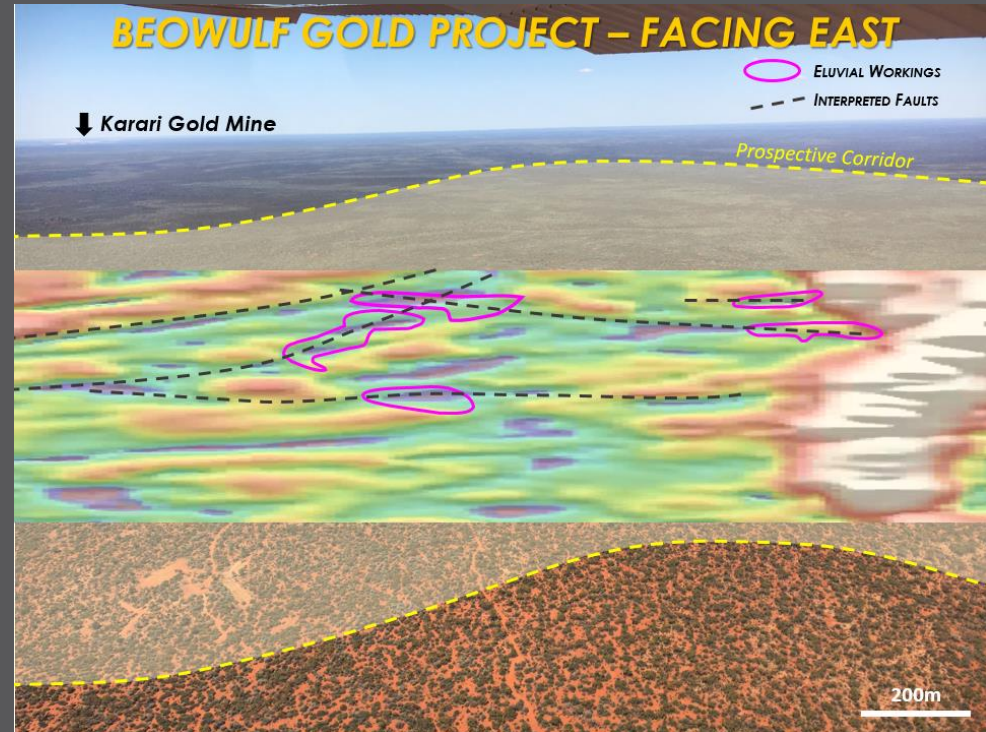


# BEOWULF GOLD PROJECT

For personal use only

- Geophysical data indicates multiple targets using Aruma's model
- Eluvial workings align with significant geological features
- Large corridor not subjected to modern exploration
- Nugget area define greywackes
- Shales under (west of) greywackes

**Workings = Nuggets = Lodes = Drill Targets**



# EXPLORATION PIPELINE

For personal use only

## PHASE 1

## PHASE 2

## PHASE 3

## PHASE 4

### SLATE DAM

RC Drilling  
Dec 17 - Jan 18

RC Drilling  
April 18- June 18

Results Pre-resource  
June 18 - August 18

Resource Drilling  
Late 18

### BEOWULF

Soil Sampling  
January – May 18

Grant Leases  
April-June 18

Mapping and  
Geophysics July 18

RC Drilling  
October 18

### Other areas

Kopai Granted  
April 2018

Clinker Hill Geochem  
February 2018

Mt Deans Li Grant  
March 2018

# WHY INVEST WITH ARUMA?



- Experienced Team with proven track record of major gold discoveries in Western Australia
- Own 100% of two large prospective gold Projects near the >100Moz Kalgoorlie gold deposit
- Focus on discovering multi million ounce gold deposits
- Maiden drill program delivers immediate results – Validates & strengthens exploration model
- Applying new exploration model to the Eastern Goldfields – Large sediment-hosted Gold Deposits
- First mover advantage - Projects control Greenstone Belts in the underexplored Kurnalpi and Laverton Terranes
- Second drilling program commencing in early 2018

***Active, targeted, ongoing, in-ground exploration throughout 2018 – Results drive shareholder value***

For personal use only

The main logo for ARUMA Resources Limited, identical to the one in the top right corner, but larger and centered. A thick yellow swoosh graphic starts from the left edge of the slide and curves under the logo towards the right edge.

## **Contact Details**

### **Peter Schwann, Managing Director**

Aruma Resources Limited

Telephone: +61 8 9321 0177

M: +61 417 946 370

E: [info@arumaresources.com](mailto:info@arumaresources.com)

### **Media and Investor Relations**

James Moses

Mandate Corporate

Mobile: +61 420 991 574

E: [james@mandatecorporate.com.au](mailto:james@mandatecorporate.com.au)

# APPENDIX

**Some background information to help you understand the model, targets and Aruma's aims**

For personal use only

# ARUMA'S EXPLORATION MODEL



For personal use only

## CLEARLY DEFINED & VALIDATED EXPLORATION MODEL

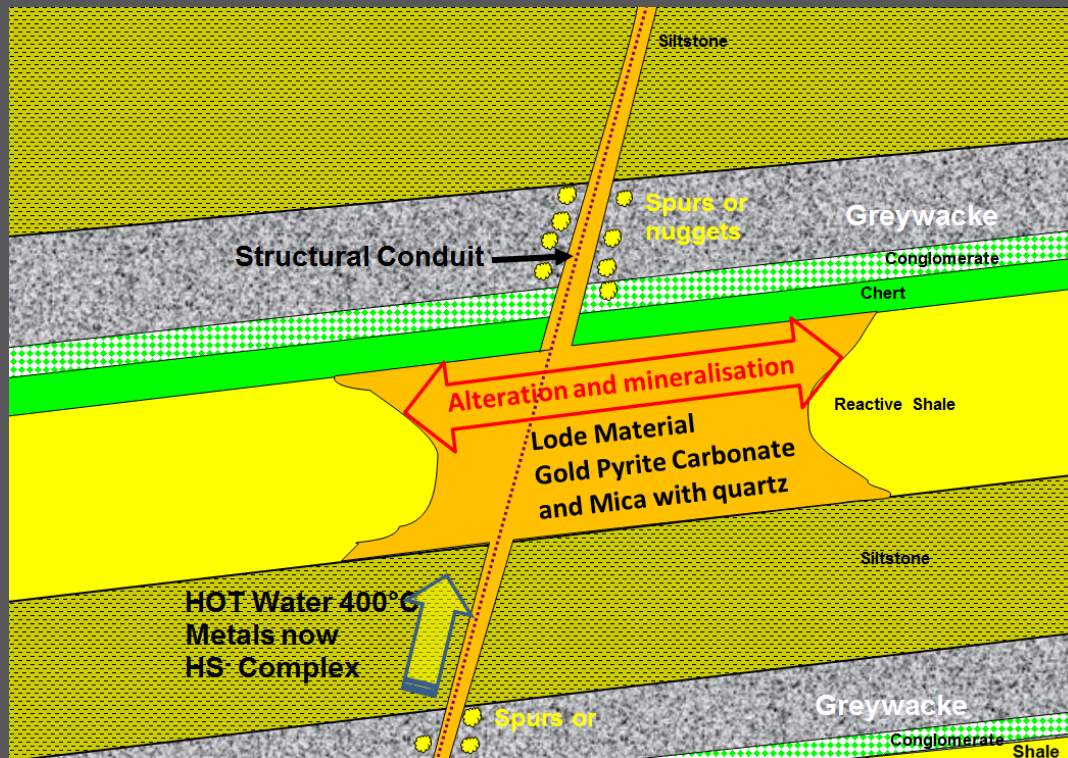
Aruma adopts a technical approach to the discovery of major gold deposits of >10Mt at >3g/t Au for an >1M Oz open cut operation - require both tonnes and grade;

- Target sedimentary host rocks of the Black Flag Group (BFG) in the eastern granites
- Target quartz veins in greywacke sandstones and lodes in shales
- Use strong hydrothermal signatures of Bismuth as a prime gold indicator

- Aruma's sedimentary-hosted gold model is confirmed by the work of the Centre for Ore Deposit and Earth Sciences (CODES) at the University of Tasmania
- CODES is a global leader in the research and discovery of base and precious metal deposits
- CODES work successfully used by major goldminers, KCGM at the Superpit & Gold Fields Ltd and exploration companies



For personal use only



## TARGET HIGH GRADE MULTI-MILLION OUNCE GOLD DEPOSITS

### How it Works

- Hot fluids leach gold
- Hot fluids travel up structures
- Fluids deposit gold in reactive rocks
- **Coarse gold - greywackes**
- **Fine gold-sulphides - shales**

### Exploration Tools

- Find nuggets = Greywacke
- Look for lodes in shales
- Drill under nuggets

# TESTING THE THEORY

For personal use only

## What we Want

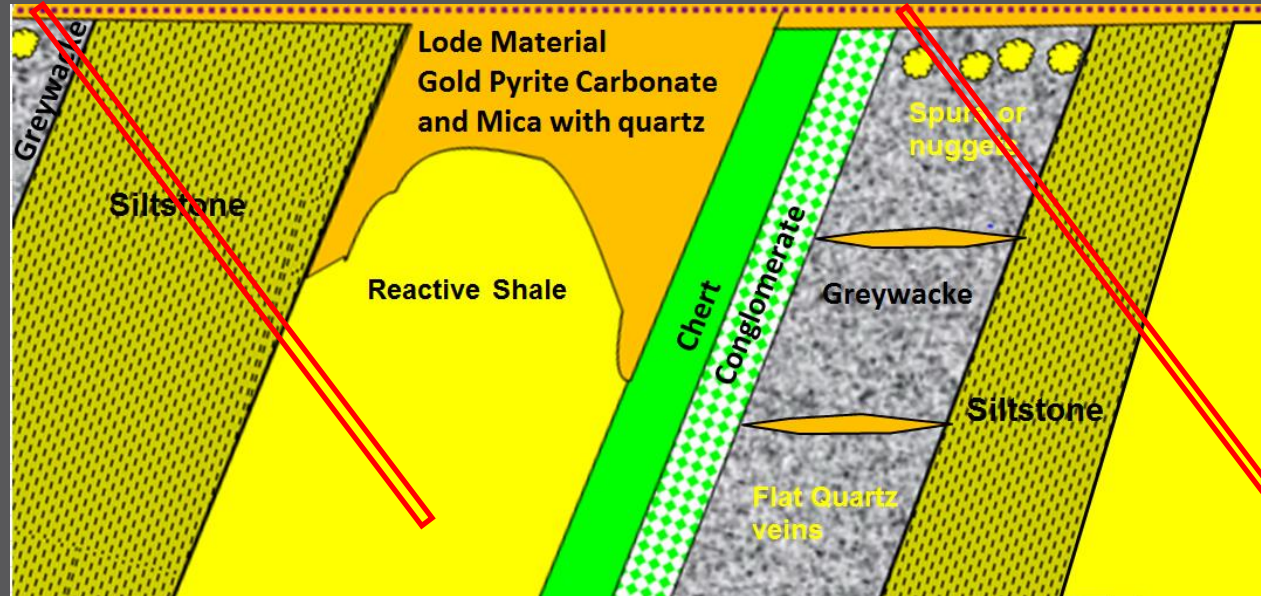
- Unidentified greenstone belts or "Felsics"
- Vacant or unloved land
- BIFs and cherts present
- Nuggets from quartz veins

## What we See

- Quartz veins in greywacke
- Lodes in shales

## What we Do

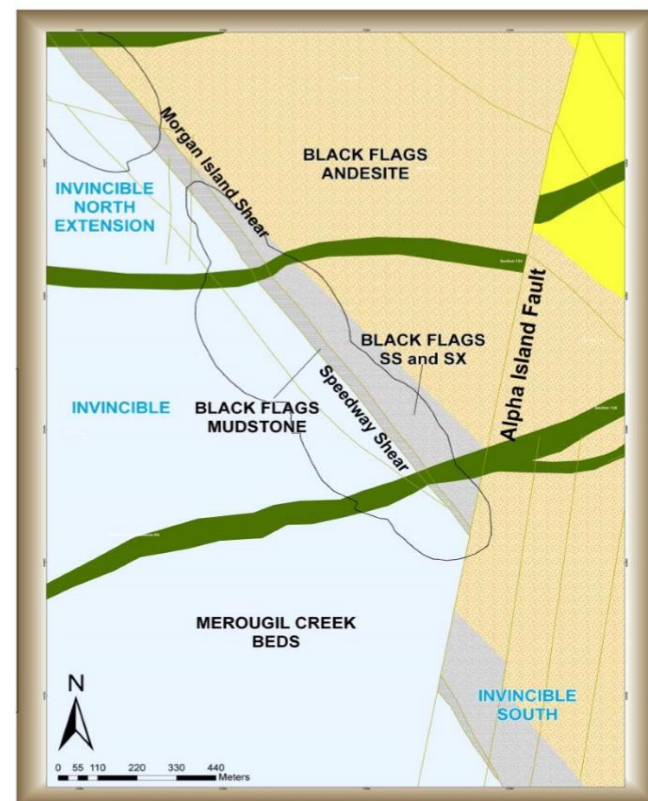
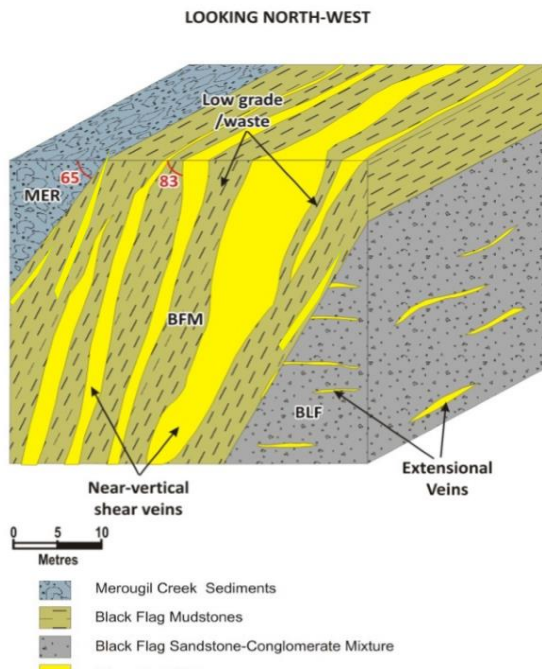
- Map the nugget or workings
- Step out to drill the Shales



# 'SEDIMENT HOSTED' GOLD MODEL DEFINED

For personal use only

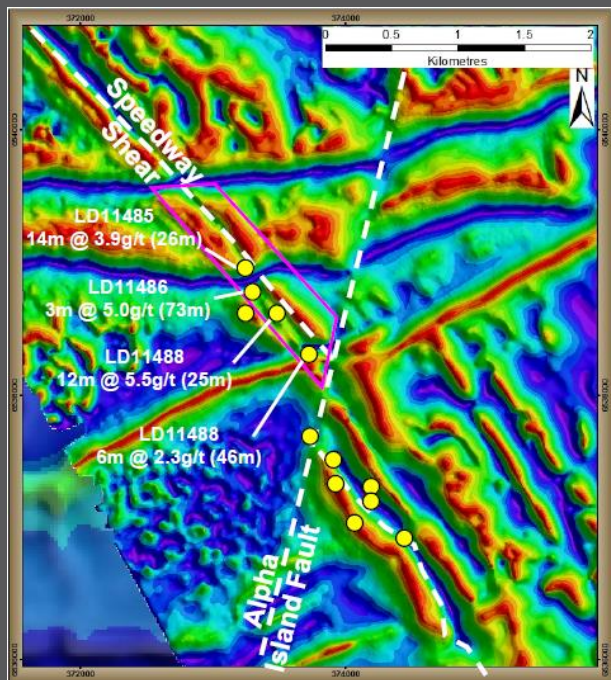
## Invincible; Deposit Characteristics & Geology



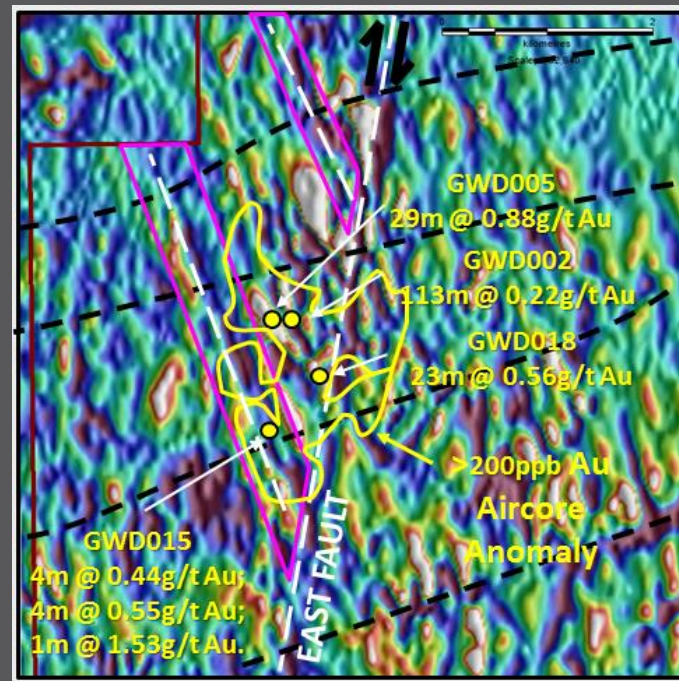
Source: Goldfields 2014 Diggers and Dealers presentation

# MAGNETICS HIGHLIGHT INVINCIBLE ANALOGY

## INVINCIBLE DISCOVERY



## SLATE DAM



Source: Goldfields 2014 Diggers and Dealers presentation

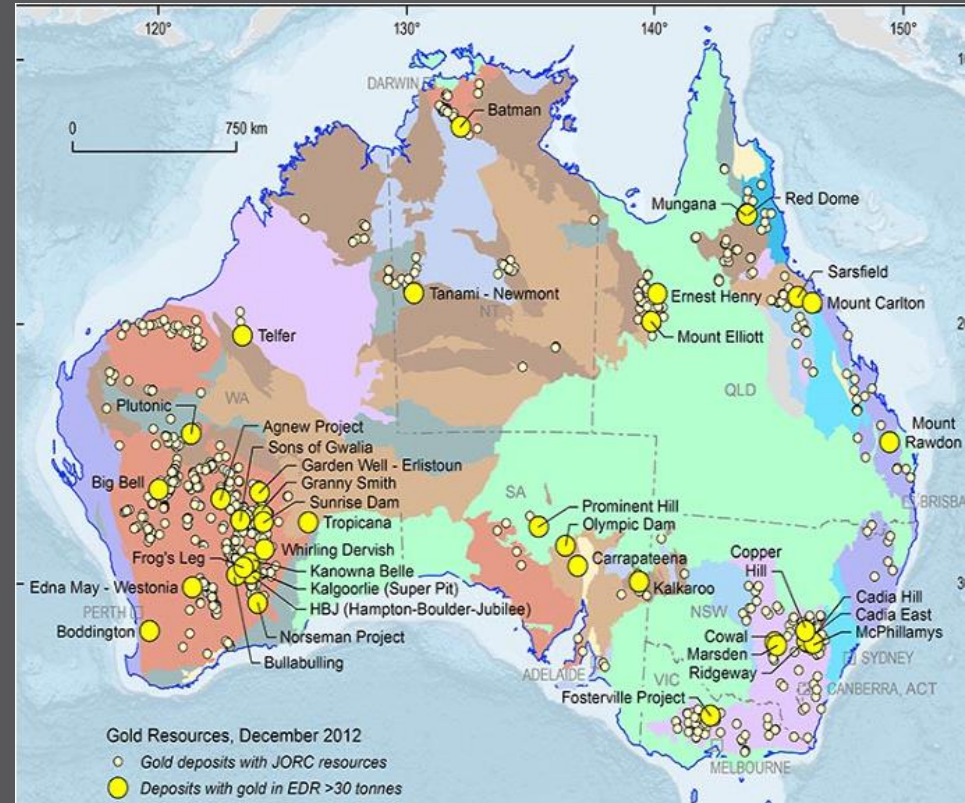
Source: Western Australian Mineral Exploration reports (WAMEX)

# EXAMPLES OF THESE DEPOSITS

For personal use only

## Gold Mines in Sediments

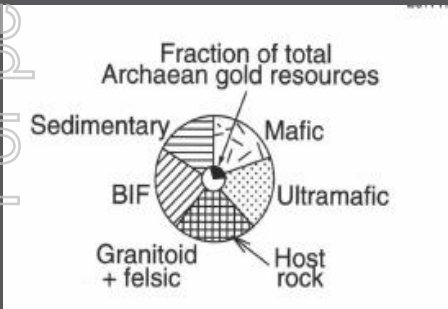
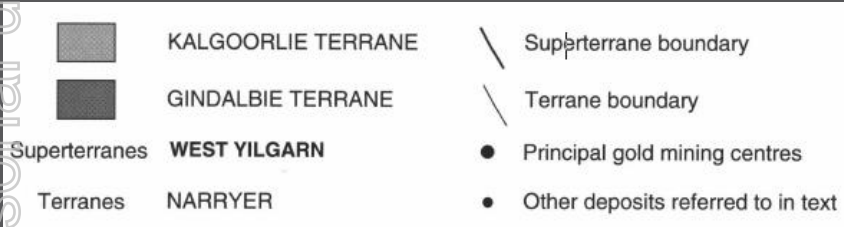
- Muruntau – 6,000t Au in 60 years
- Kumtor – 300t Au in 15 years
- Witwatersrand – 45,000t Au
- WA Goldfields – 5,000t Au
- 65% of all Australian Gold production from lode in sediments – in WA the camps are obvious and active with new discoveries



# WHICH TERRANE ARE WE IN?

For personal use only

We are between the Mafic Dominated and Sediment Dominated Terranes



From “Mineral potential of the Archaean Pilbara and Yilgarn Cratons, Western Australia” by W.K. Witt ,2, A.H. Hickman , D. Townsend & WA. Preston.

