

ASX : AAJ

This is the Tillex Copper Project

An emerging high-grade copper sulphide asset, Timmins Minerals District, Canada

Aruma Resources Limited

RIU Sydney Resources Roundup, May 2026



DISCLAIMER

DISCLAIMER AND FORWARD-LOOKING STATEMENTS

This presentation has been authorised for release by the Board of Aruma Resources Limited. It is not a prospectus nor an offer of securities for subscription or sale in any jurisdiction nor a securities recommendation. The information in this presentation is an overview and does not contain all information necessary for investment decisions. In making investment decisions, investors should rely on their own examination of Aruma Resources Limited (Company) and consult with their own legal, tax, business and/or financial advisers in connection with any acquisition of securities or interest in the Companies Projects. The information contained in this presentation has been prepared in good faith by the Company. However, no representation or warranty, express or implied, is made as to the completeness or adequacy of any statements, estimates, opinions or other information contained in this presentation. To the maximum extent permitted by law, the Company, its directors, officers, employees and agents disclaim liability for any loss or damage which may be suffered by any person through the use of, or reliance on, anything contained in or omitted from this presentation. Certain information in this presentation refers to the intentions of the Company, but these are not intended to be forecasts, forward looking statements, or statements about future matters for the purposes of the Corporations Act 2001 (Cth) or any other applicable law. The occurrence of events in the future are subject to risks, uncertainties and other factors that may the Company's actual results, performance or achievements to differ from those referred to in this presentation to occur as contemplated. The presentation contains only a synopsis of more detailed information available in relation to the matters described in this document and accordingly no reliance may be placed for any purpose whatsoever on the sufficiency or completeness of such information and to do so could potentially expose you to a significant risk of losing any of the property invested by you or incurring by you of additional liability. Recipients of this presentation should conduct their own investigation, evaluation and analysis of the business, data and property described in this presentation. In particular, any estimates or projections or opinions contained herein necessarily involve significant elements of subjective judgment, analysis and assumptions and you should satisfy yourself in relation to such matters.

COMPETENT PERSONS STATEMENT

The information in this report regarding exploration results, exploration targets and the mineral resources is based on and fairly represents information compiled by Mr. Grant Ferguson, a Competent Person who is a Fellow of the Australasian Institute of Mining and Metallurgy. Mr. Ferguson is a full-time employee of the Company and has sufficient experience that is relevant to the style of mineralisation and type of deposit under consideration and to the activity being undertaken to qualify as a Competent Person as defined in the 2012 Edition of the 'Australasian Code for Reporting of Exploration Results, Mineral Resources and Ore Reserves'. Mr Ferguson consents to the inclusion in this presentation of the matters based on his information in the form and context in which it appears. The information is extracted from the announcement dated 22 January 2026 entitled "Aruma Acquires High-Grade Copper Sulphide Project" and is available to view on the website www.aruma.com. The Company confirms that it is not aware of any new information or data that materially affects the information included in original market announcement and, in the case of exploration results, that all material assumptions and technical parameters underpinning the results in the relevant market announcement continue to apply and have not materially changed. The Company confirms that the form and context in which the Competent Person's findings are presented have not been materially modified from the original market announcement.

The interpretations and conclusions reached in this presentation are based on current geological theory and the best evidence available to the author at the time of writing. It is the nature of all scientific conclusions that they are founded on an assessment of probabilities and, however high these probabilities might be, they make no claim for absolute certainty. Any economic decisions which might be taken on the basis of interpretations or conclusions contained in this presentation will, therefore, carry an element of risk.

Cover image: Core photograph from hole TX25-034, also referred to in slide 7. Full hole details provided in announcement dated 22 January 2026.

This Presentation has been approved by the Board of Aruma Resources Limited

CORPORATE SNAPSHOT

Share price

\$0.013

1 May 2026

52 week high \$0.04, low \$0.007

Market capitalisation

~\$9.5m

1 May 2026

Shares on issue

733.7m

*Options

506m

Cash

~\$1.896m

as at 31 March 2026

Share price performance

as at 1 May 2026



Board and Management

James Moses, Non-Executive Chairman

Grant Ferguson, Managing Director

Brett Smith, Non-Executive Director

Phil MacLeod, Company Secretary

Major Shareholders

Top 20: 29.16%

Top 100: 70.3%

Board & Associated: 1.9%

No. of Shareholders: 1,687

*Various option series and expiry dates

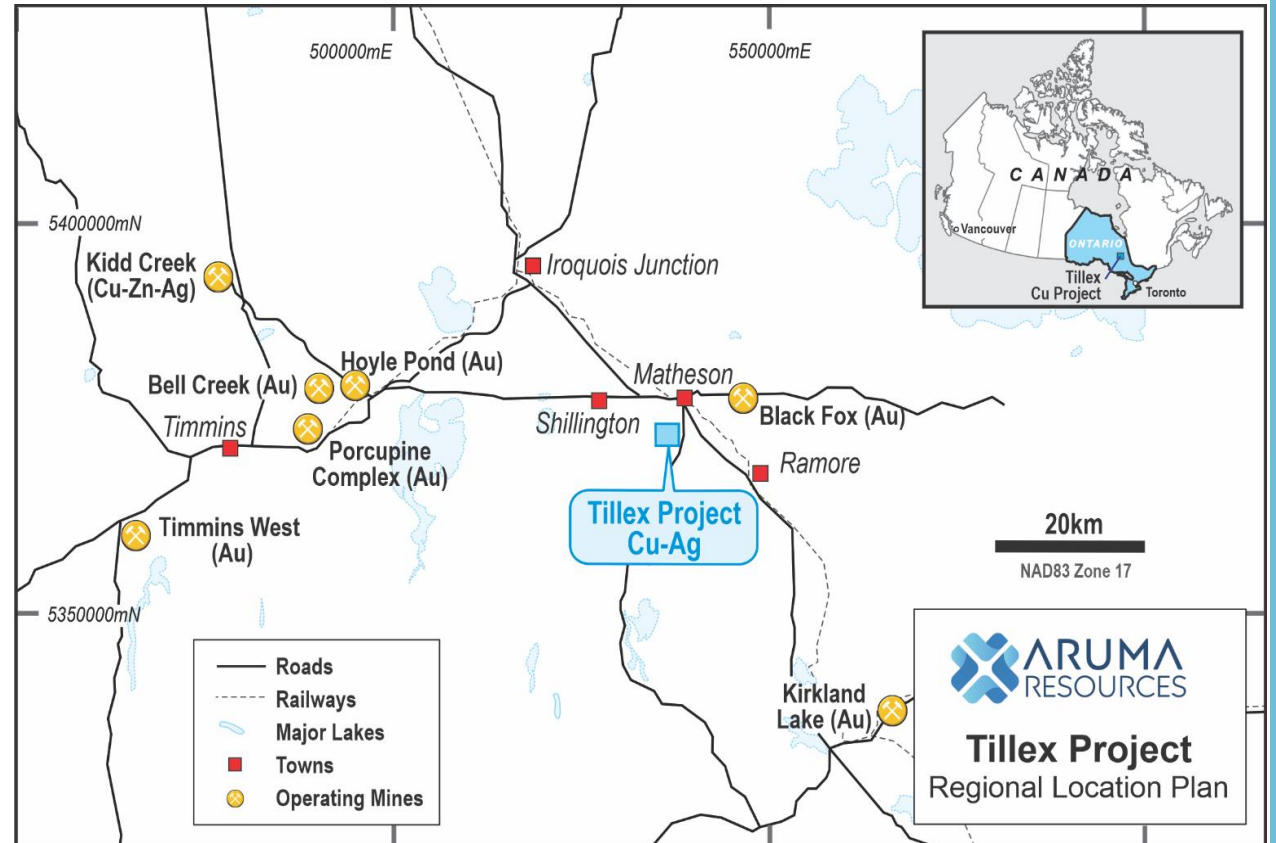
Project Highlights

- Tillex Project is a **well-defined high-grade copper sulphide deposit** with **major exploration potential**; acquisition comes at a time of **surging copper prices and strong supply-demand metrics for copper**
- Total of **10,283.6m of diamond drilling completed** by previous operators, **consistently returned very large, shallow intersections of high-grade copper**; **110m @ 1.69% Cu and 7.05g/t Ag from 34m (TX24-020)**
- Drilling also **returned significant high-grade silver results**; **5m @ 355.30g/t Ag from 89m (TX11-008)**
- **Project sits on patented claims**, giving **Aruma full title of land and underlying minerals rights** – no landowner approvals required for on-ground exploration; **First Nations agreement in place** on MEK-purchased property
- Copper sulphide **mineralisation commences from ~30m** below surface and is **drill-tested to ~150m** depth - **high-grade copper currently defined over a 450m strike** and is **open to the north, south, west and at depth**
- **Ideally located in Timmins mining district**; project has direct year-round access and direct access to power on claim boundary; **highly experienced Project Manager appointed**

Acquisition completed February 2026 - maiden diamond drilling campaign underway

Project Location & Infrastructure

- Located in prolific Tier-1 Timmins mining district, Ontario, Canada; major gold producing region, significant VMS and strata-bound copper projects
- 57km east of city of Timmins and **~60km from Glencore's Kidd Creek Copper Project**; produces **ave. 40,000t Cu and 70,000t Zn p/a¹**
- Tillex Project **directly accessible year-round** via highway/sealed roads, and has **direct access to power at the claim boundary**
- Timmins district offers ready supply of **skilled mining and resources personnel and services**

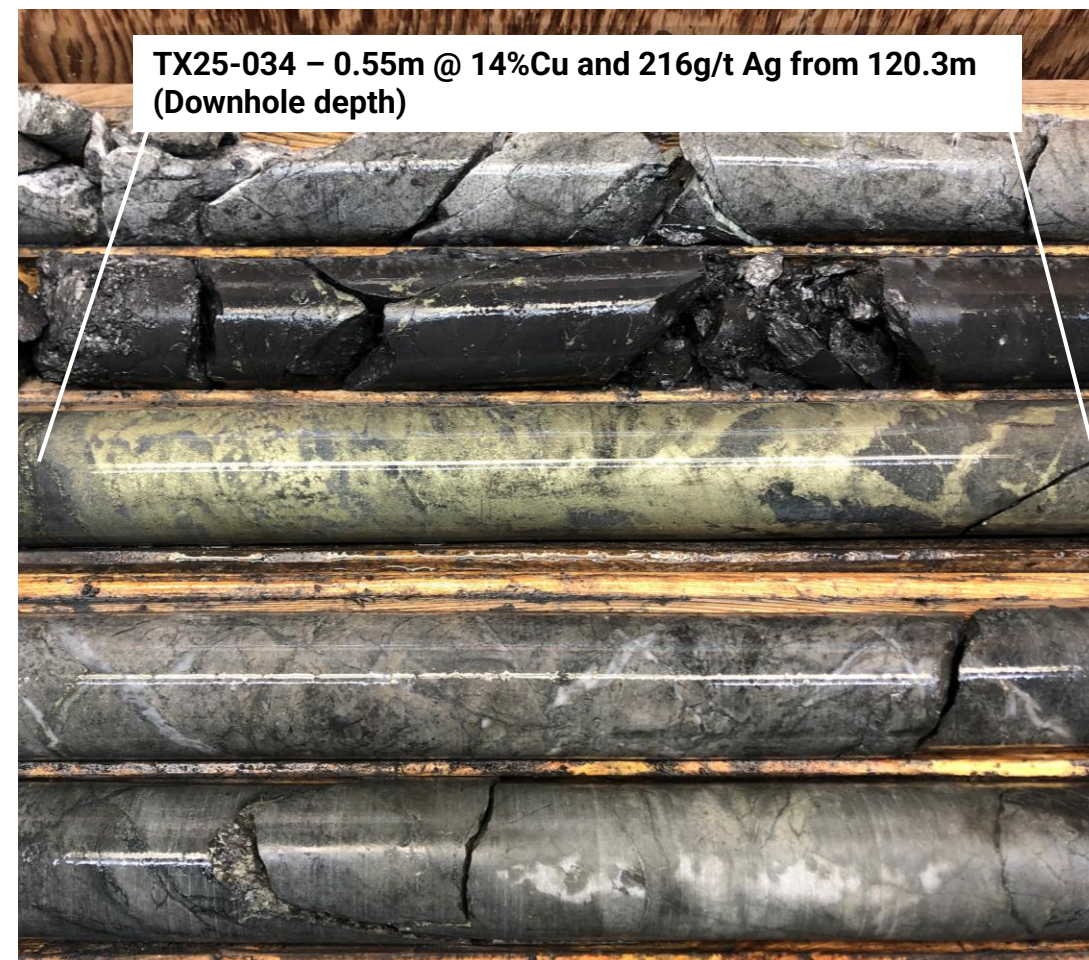


¹Glencore Canada Website: <https://www.glencore.ca/en/kidd/about-us>

High-grade Copper & Silver Drilling Intersections

Tillex Project discovered in 1973 and acquired by TSX-V listed Metals Creek Resources (MEK) in 2008 – **10,283.6m diamond drilling completed. Highlight copper and silver intersections** from MEK drilling include;

- **110m @ 1.69% Cu and 7.05g/t Ag from 34m (TX24-020), incl;**
 - **28.72m @ 2.35% Cu and 9.52g/t Ag from 55m, and**
 - **29m @ 2.64% Cu and 12.31g/t Ag from 100m**
- **98.2m @ 1.82%Cu and 13.17g/t Ag from 35.8m (TX25-034)**
- **92.05m @ 2.12% Cu and 12.18g/t Ag from 36.95m (TX24-022), incl;**
 - **27m @ 2.74% Cu and 7.45g/t Ag from 56m, and**
 - **29m @ 3.26% Cu and 20.92g/t Ag from 98m**
- **84.13m @ 1.78% Cu and 8.39g/t Ag from 40m (TX08-004), incl;**
 - **29m @ 2.59% Cu and 7.37g/t Ag from 51m**
- **63.90m @ 1.94% Cu and 10.20g/t Ag from 38.6m (TX24-021), incl;**
 - **27.2m @ 2.5% Cu and 10.78g/t Ag from 43m, and**
 - **17.9m @ 2.96% Cu and 17.43g/t Ag from 83.6m**



Highlight results continued over page

High-grade Copper & Silver Drilling Intersections

- **42.46m @ 2.12% Cu and 53.45g/t Ag from 53.77m (TX11-008), incl;**
 - **5m @ 5.55% Cu and 355.30g/t Ag from 89m; and**
 - **36.25m @ 1.39% Cu and 14.96g/t Ag from 104m**
- **39.2m @ 1.91% Cu and 3.98g/t Ag from 31.80m (TX25-031), incl;**
 - **19.2m @ 3.39% Cu and 5.64g/t Ag from 31.80m, and**
 - **17.8m @ 0.95% Cu and 3.32g/t Ag from 104m**
- **37.05m @ 2.58% Cu and 7.72g/t Ag from 30.95m in TX08-002, and**
 - **5m @ 1.25% Cu and 6.25g/t Ag from 109m**
- **36.34m @ 2.06% Cu and 10.29g/t Ag from 73.66m (TX08-005), and**
 - **5.92m @ 1.14% Cu and 6.14g/t Ag from 117.08m**
- **31.37m @ 1.15% Cu and 4.47g/t Ag from 40.74m (TX11-001) , and**
 - **33m @ 1.79% Cu and 9.23g/t Ag from 75m**



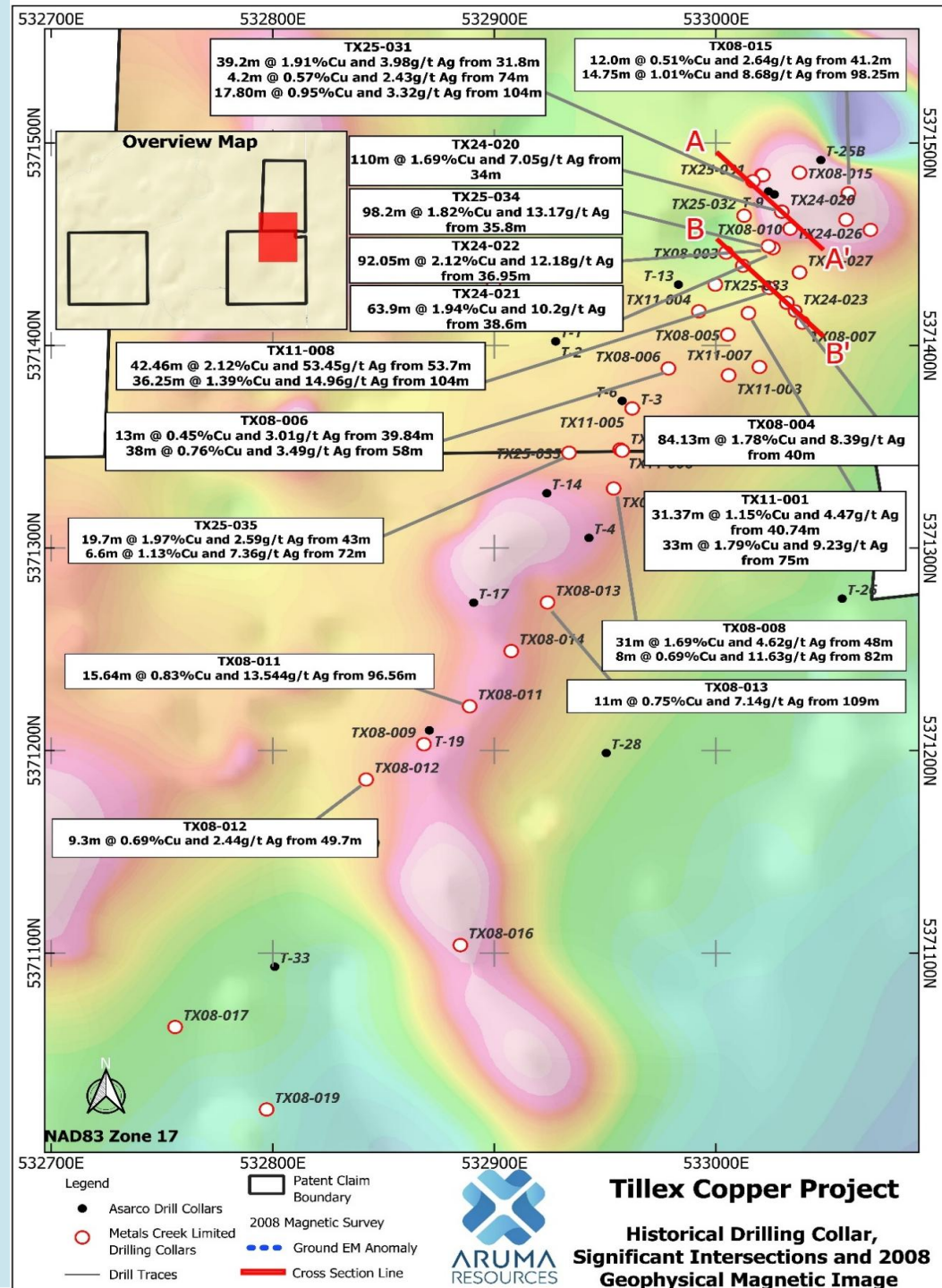
Note: All depths stated are downhole depths. Intercepts based on a lower cutoff of 0.2% Cu and a maximum of 2m of internal dilution. Minimum intersection width of 2m.

Plan view; high-grade copper & silver drilling intersections

“We are excited by the scale, geometry and growth potential of the Project, and by the strong body of high-grade results delivered to date. We see great potential for the discovery of additional strata-bound-hosted or VMS copper mineralisation along strike and at depth beyond the Project’s drill-defined area.”

Aruma Resources Managing Director, Grant Ferguson

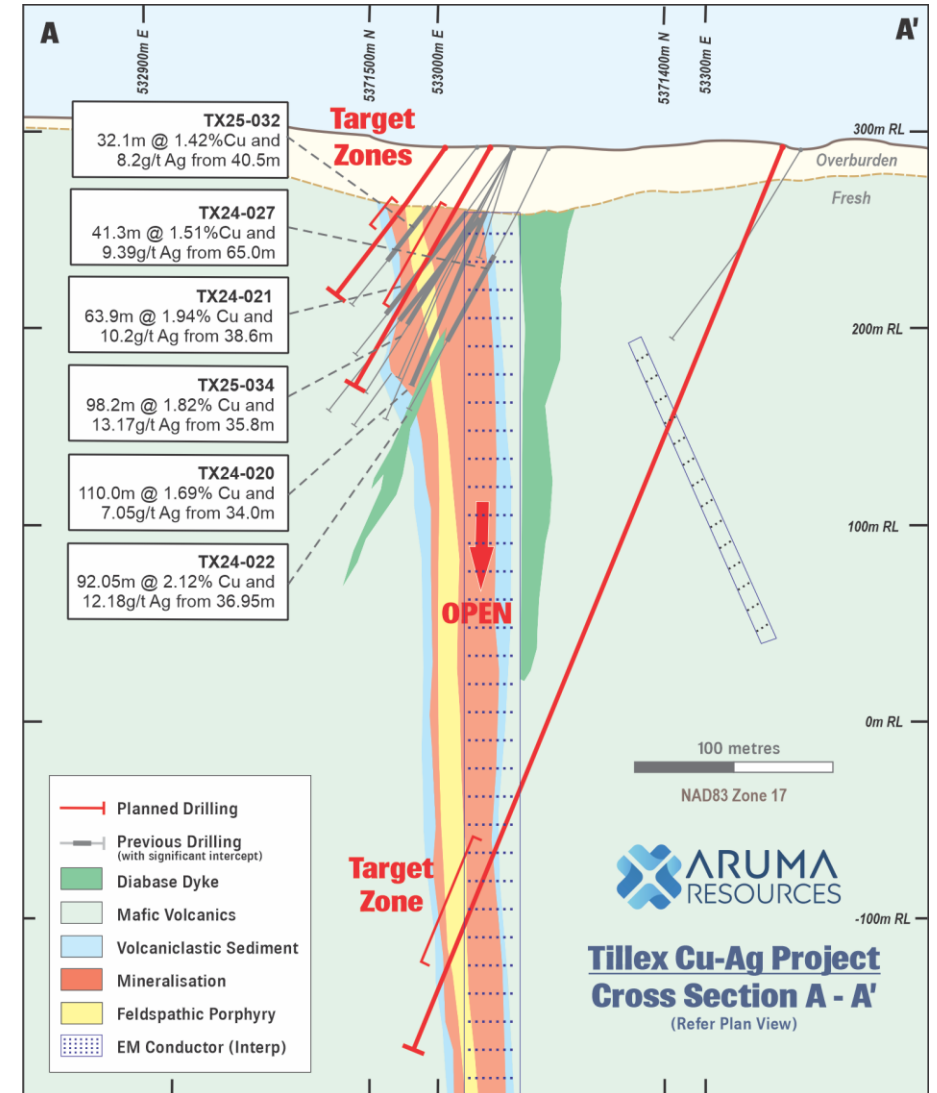
Note: Significant areas of interpreted strike to the north and south extend outside the map area and are not shown on the map



EM Survey

- Extensive EM Survey conducted by Aruma over majority of project area returns positive outcomes
- The EM Survey has identified two significant EM conductors:
 - **Main Conductor**, incorporates the drill-defined high-grade Tillex Copper-Silver Deposit, defined over a strike length of 600m and to a depth in excess of 400m
 - **East Conductor** is located immediately east and of the Tillex Deposit and exhibits very strong conductivity, with a strike length of +200m and open at depth

These conductors significantly expand the Project's prospectivity for additional copper-silver mineralisation and define targets for a maiden drill campaign.



Maiden Diamond Drilling Program Commenced & Ongoing

- Maiden Drilling campaign commenced with an initial ~1,500m of diamond drilling. Diamond Drilling Program Targets:
 - Tillex's high-grade copper mineralised footprint along strike, testing EM identified strike extensions; and
 - Depth extension potential identified to ~400m depth, approximately 250m below deepest copper drill intersections
- Assay results from initial phase of drilling expected May 2026
- Second phase of drilling to continue beyond this first phase based upon assay results and field observations
- Drilling campaign aims to quantify the full strike and depth potential of the Project's copper-rich mineralised footprint, to facilitate a significant Mineral Resource estimation



Image: Historical Drilling Significant Intersection TX24-020
76.50 to 82.25m

Project Strategy

Aruma is undertaking a **dual, exploration and resource development, strategy;**

- **expand the Project's mineralised footprint along strike** - to the north, south and west, and at depth;
- **test for similar parallel mineralised structures** within the wider project area; and
- **confirm a maiden Mineral Resource Estimate (MRE).**

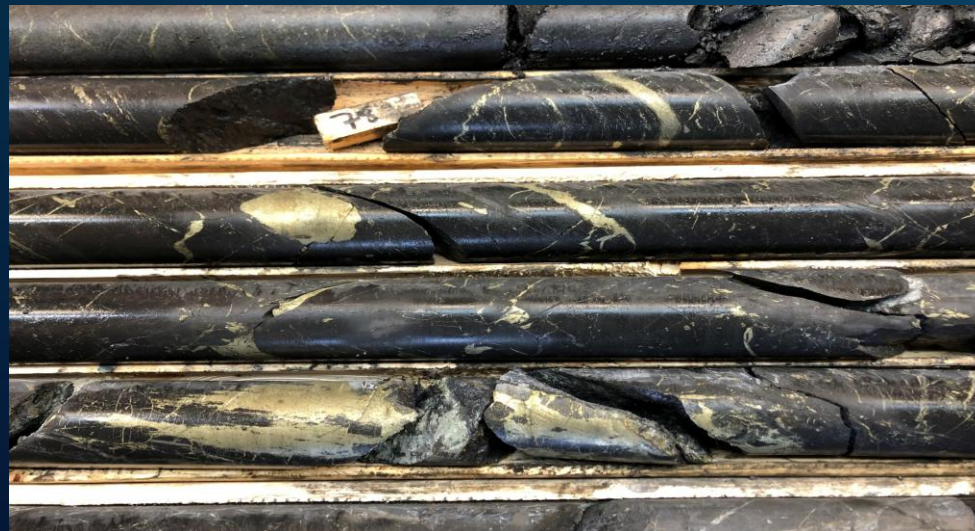


Image: Diamond drill core from TX24-020. - 77m to 83m Downhole Depth

Aggressive Exploration Strategy to Drive Value

Exciting game changing copper sulphide project; acquisition has generated a strong start to 2026, with the Company focused on significant expansion of known mineralisation

- Tillex Copper-Silver Project Acquisition announced – **22 January 2026**
- Tillex Copper-Silver Project Acquisition completed – **11 February 2026**
- Ground EM Survey completed; extends strike and depth potential – **1 April 2026**
- Maiden Diamond Drilling Campaign commences – **20 April 2026**
- Initial Drill Assay Results – **May 2026**
- Phase 2 of Drilling Campaign to commence – **Q2, 2026**

Works Program

ACTIVITY	STATUS	APRIL	MAY	JUNE	JULY	AUGUST	SEPTEMBER	OCTOBER
Reinterpretation of historical geophysics	<input checked="" type="checkbox"/>							
Collection and relogging of available historical core								
Ground Based EM	<input checked="" type="checkbox"/>							
Diamond Drilling – Phase 1								
Assay Results								
Diamond Drilling – Phase 2*								
Metallurgical Analysis								

*Diamond Drilling Program - Phase 2 based upon Assay results and field observations

Contact Details

Grant Ferguson, Managing Director

Aruma Resources Limited

Telephone: +61 401 479 740

E: info@arumaresources.com